

Stamp-A-Palooza
2017
Fabulous Fun Folds
Season Like Christmas Fun Fold



www.createwithdee.com

Dee Slater, Independent Stampin' UP! Demonstrator
Create! with Dee

Card Designed by Davette Miller, Independent Stampin' UP! Demonstrator – Member of the Designer
Paper Dolls!

Products Used:

Product List
Stamp

- [Season Like Christmas Photopolymer Stamp Set \[144860\]](#)

Ink

- [Island Indigo Classic Stampin' Pad \[126986\]](#)
- [Bermuda Bay Classic Stampin' Pad \[131171\]](#)
- [Early Espresso Classic Stampin' Pad \[126974\]](#)
- [Versamark Pad \[102283\]](#)

Card Stock

- [Island Indigo 8-1/2" X 11" Card Stock \[122923\]](#)
- [Year Of Cheer Specialty Designer Series Paper \[144640\]](#)
- [Whisper White 8-1/2" X 11" Card Stock \[100730\]](#)
- [Silver Foil Sheets \[132178\]](#)
- [Silver Glimmer Paper \[135314\]](#)

Tools & Adhesive

- [Heat Tool \[129053\]](#)
- [Tear & Tape Adhesive \[138995\]](#)
- [Stampin' Dimensionals \[104430\]](#)
- [Liquid Multipurpose Glue \[110755\]](#)

Accessory

- [Clear Wink Of Stella Glitter Brush \[141897\]](#)
- [Rhinestone Basic Jewels \[144220\]](#)
- [Silver Stampin' Emboss Powder \[109131\]](#)

Big Shot

- [Stitched Shapes Framelits Dies \[145372\]](#)
- [Big Shot \[143263\]](#)

Cut Materials

Island Indigo: 4 ¼ x 10 ¼, scored along the 10 ¼ side at 5 ½, 6 ½, 8 ¾, 9 ¾

2 ¾ x 5 ¾ scored at 4 ¼ & 5 ¼, ¾ x 3

Designer Paper: 4 x 3, 2 x 4

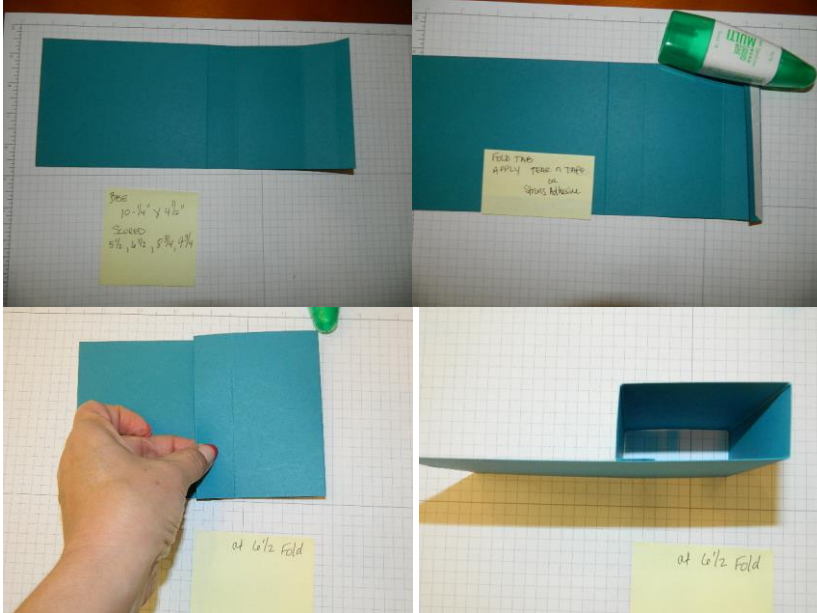
Silver Foil 4 x 2 ½

Whisper White: 4 x 2 ½, ½ x 2 ¾, 4 x 5 ¼

Used 2nd largest oval die

Steps:

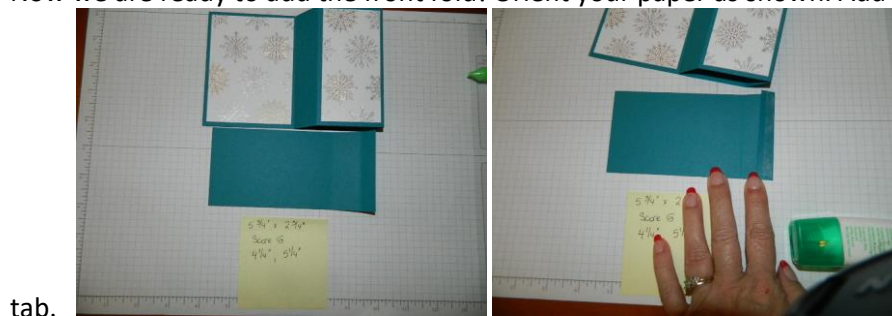
1. Orient your card base as shown. Turn back the 'tab' section and apply strong adhesive.



2. Fold at the 6-1/2" score. Adhere tab down. It should look like this when done. TIP! "test" before you glue down to make sure you get a box look above.



3. Add Cheers to Years Designer Paper.
4. Now we are ready to add the front fold! Orient your paper as shown. Add strong adhesive on



tab.

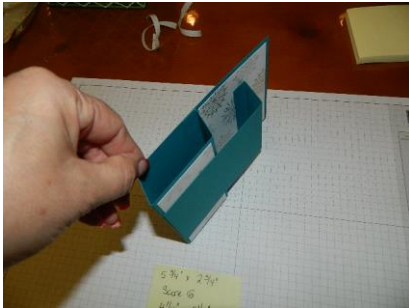
5. Position front fold this way and add adhesive to bottom 1-1/2 inches and a little on the base too!



6. Keep the base flatten, and add the front fold section to base. Note the adhesive for the tab is facing up for now.



7. Turn under the tab and adhere to base. TIP! "Test first". When finished it will look like this.



8. Easy breezy from this point! Stamp your tree images from Season Like Christmas onto Whisper White Cardstock. Add Wink of Stella and Silver Glimmer Paper (1/4 and 1/8 hole punches used.)



Adhere unto front fold

9. Add the Silver Foil Sheet with the oval cutout. Add embossed sentiment layer to bottom and add Rhinestones!



10. Add a stamped image to back of card using Whisper White.

